

**Tom Jankovsky**  
District 1

**John Martin, Chair**  
District 2

**Mike Samson, Chair Pro Tem**  
District 3



April 4, 2022

The Honorable Lauren Boebert  
United States House of Representatives  
1609 Longworth House Office Building  
Washington, DC 20515

**Re: Letter of Support for the proposed bill "To require the Secretary of Transportation to conduct a study on the significant improvements and potential alternatives necessary to offset extended closures associated with Interstate Route 70, and for other purposes."**

Dear Congresswoman, Boebert,

We submit this letter in support of your bill "To require the Secretary of Transportation to conduct a study on the significant improvements and potential alternatives necessary to offset extended closures associated with Interstate Route 70, and for other purposes."

Since its historic completion, the 18-mile section of I-70 that travels through the Glenwood Canyon in Garfield County presents a stunning travel experience but also succumbs to significant natural hazards that can close this critical route indefinitely crippling vital interstate commerce and impacting travelers. These closures have been exacerbated by the severe mud / debris flows that resulted from the Grizzly Creek Fire in the summer of 2020. These unpredictable and extended closures force interstate traffic volumes to seek alternative east to west routes such as CO 9 to US 40 to CO 13 to I-70 or the route over Cottonwood Pass on Eagle and Garfield County roads connecting to State Highway 82.

Both Garfield and Eagle Counties have engaged with CDOT to identify sections of our respective county road portions of the Cottonwood Pass route that would need improvement if Cottonwood Pass was determined an official alternative route; however, it's important to note that these improvements cannot accommodate the larger tractor-trailer traffic. Specifically in Garfield County, we have identified Catherine Store Road (CR 100) as the preferred route where we have noted five areas that need improvements to accommodate high traffic volumes. (See attached map.) Equally as important, Eagle County has identified six specific improvements to its county road sections to complete this full Cottonwood Pass alternative route.


We appreciate and support the intention of this proposed bill that focusses much needed attention on this important local, regional and national issue. Specifically, we see the need and importance to 1) immediately fund the already identified local improvements to Garfield and Eagle County roads that serve as an alternative route during a closure as well as 2) direct significant funding to add resiliency and mitigation to the hazardous sections of I-70 in Glenwood Canyon as a dual approach.

Again, we wish to thank you for your continued efforts to benefit Garfield County and the West Slope.

Sincerely,



John Martin, Chairman



Mike Samson, Commissioner

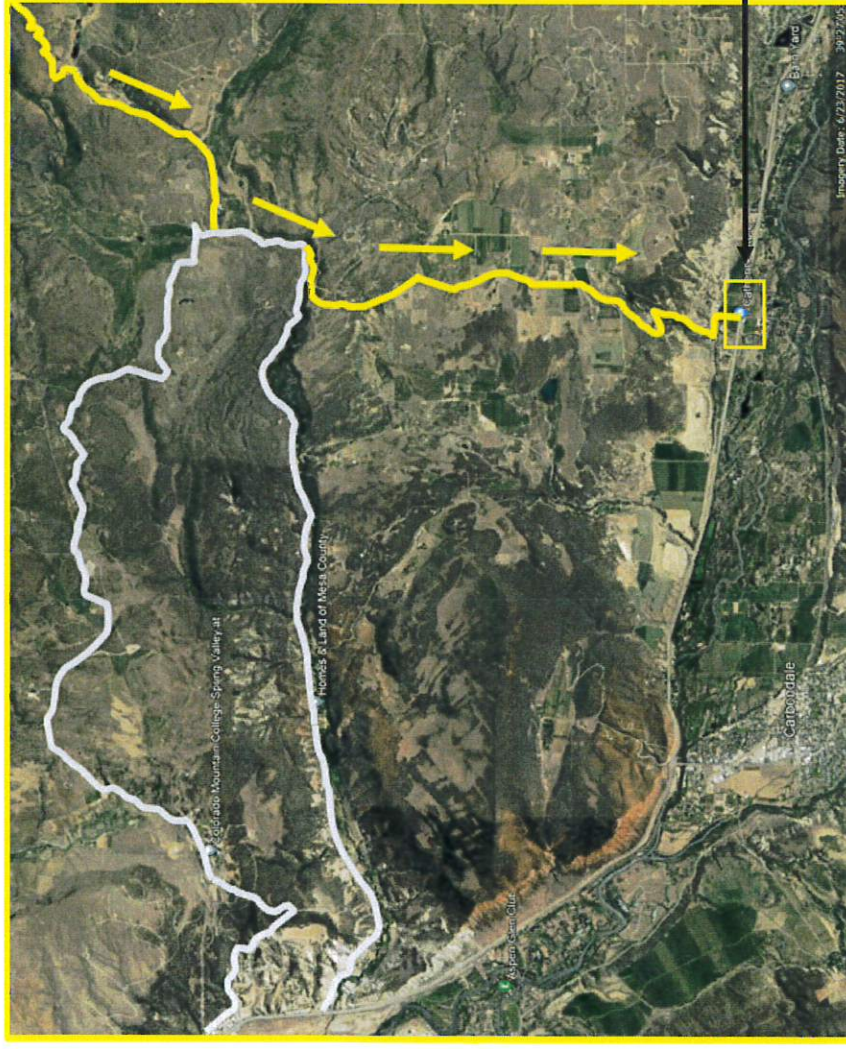


Tom Jankovsky, Commissioner

Cc Kevin Batchelder, Garfield County Manager  
Fred A. Jarman, Deputy County Manager  
Tari Williams, Garfield County Attorney  
Jeff Small, Chief of Staff, Congresswoman Lauren Boebert



# Garfield County Preferred Route: CR 100 ("Catherine Store Road")



There is already an improved interchange on our 3<sup>rd</sup> route on CR100 and that would be our preferred route highlighted in yellow.

**Needed Improvements:**  
 Soften & widen curves. Increase sight visibility & turn lane improvements from CR 100 onto SH 82.

Requires ROW Purchase

Cost: Approximately \$4-5M

